

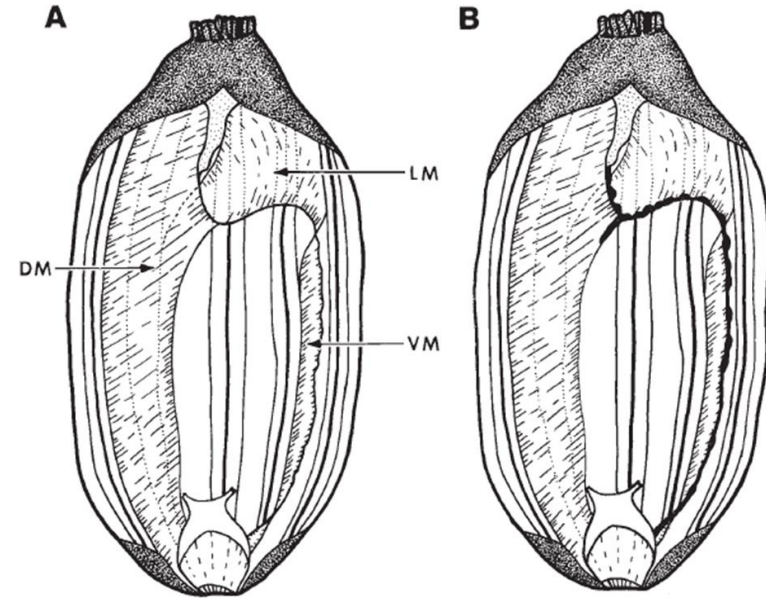
# An immunohistochemical approach to *H. glaberrima* intestinal mesentery structure

Sonya J. Malavez-Cajigas, Christian J. Nieves-Ríos, Samuel A. Álvarez-Falcón &  
José E. García-Arrarás

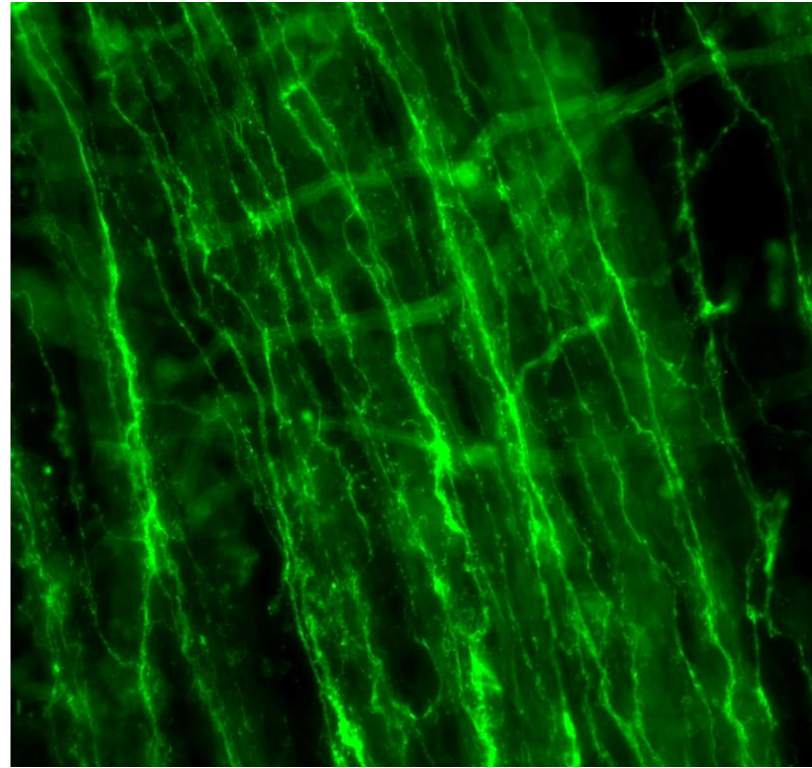
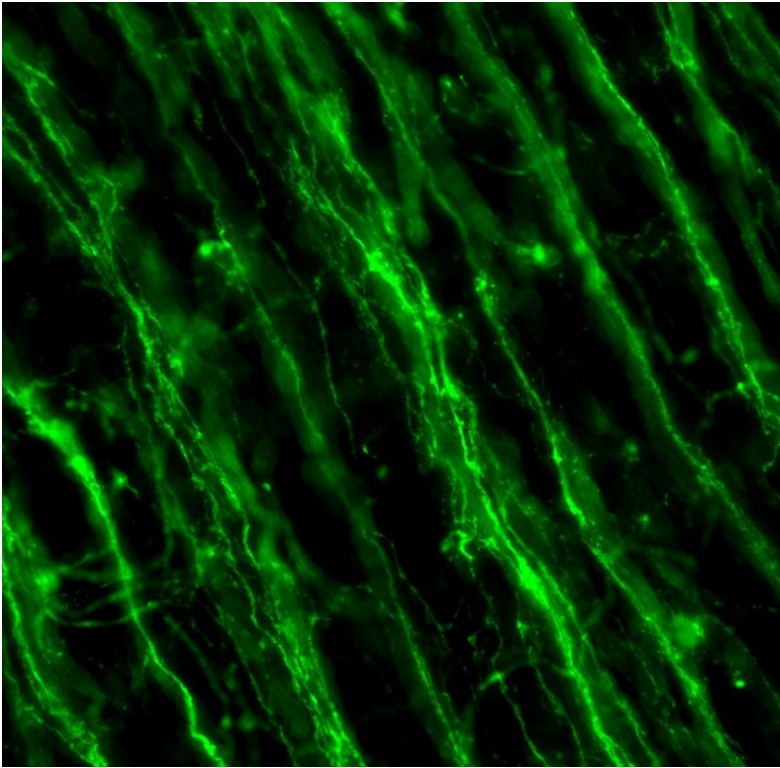


# Mesentery

- Maintains organs in place
- Mesothelium and connective tissue
- Very important for intestine regeneration



# Previous work



# Objective

**Establish the location and arrangement of the different tissue layers and nerve plexus in the intestinal mesentery.**

# Method

Animals were collected and sacrificed.

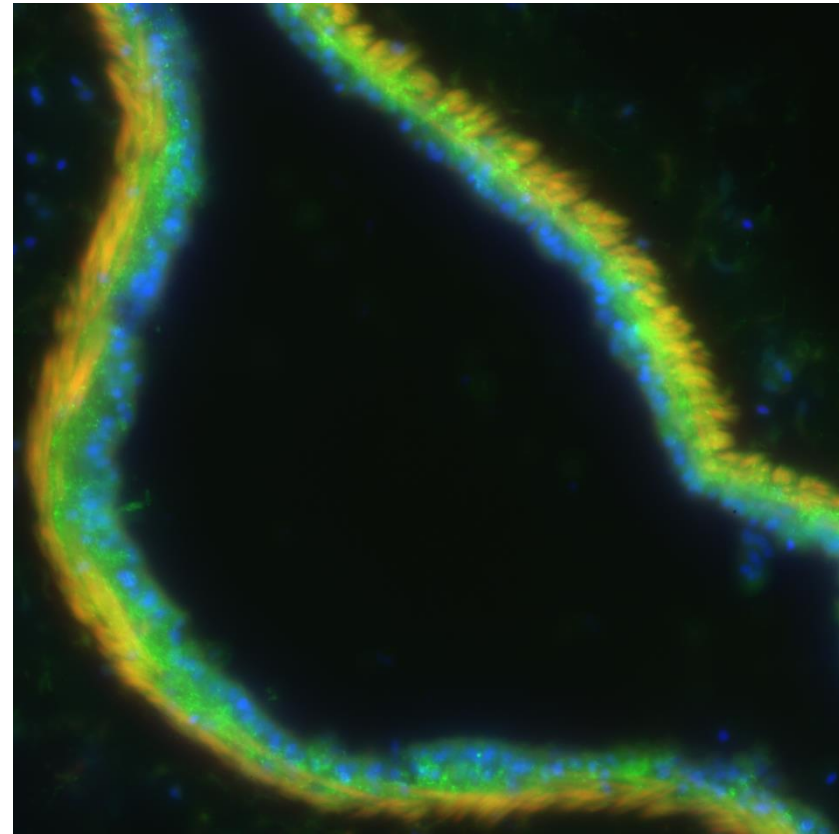
Tissue containing large intestine mesentery was obtained.

Tissue was sectioned in cryostat (20 $\mu$ m).

Immunohistochemistry was performed.

# Antibodies and markers

- Meso I- mesothelium
- Phalloidin- muscle
- RN1- nerve
- GFS- nerve subpopulation
- Collagen (IBA2)- basal lamina
- DAPI- nuclei



# Double labeling

```
graph TD; A[Double labeling] --- B[Meso I Phalloidin]; A --- C[RN1 Phalloidin]; A --- D[IBA2 Phalloidin]; A --- E[IBA2 GFS]
```

Meso I  
Phalloidin

RN1  
Phalloidin

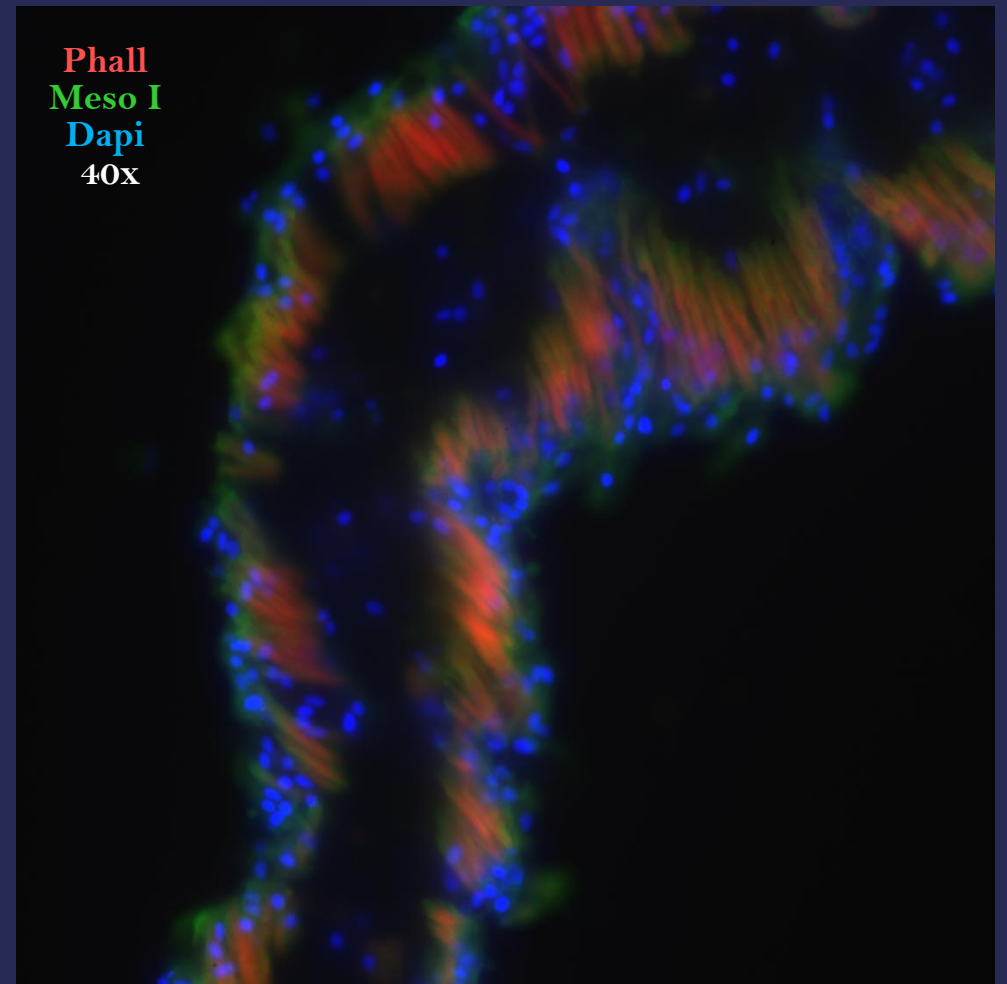
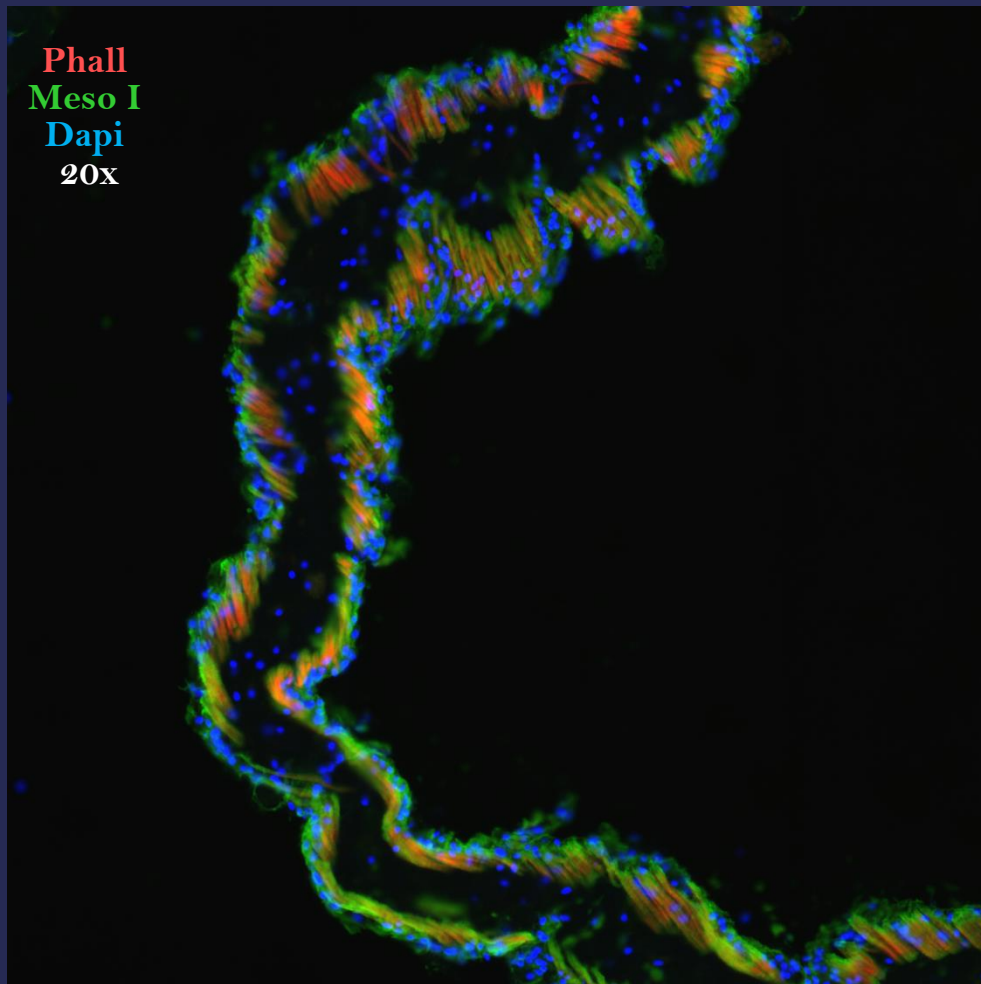
IBA2  
Phalloidin

IBA2  
GFS

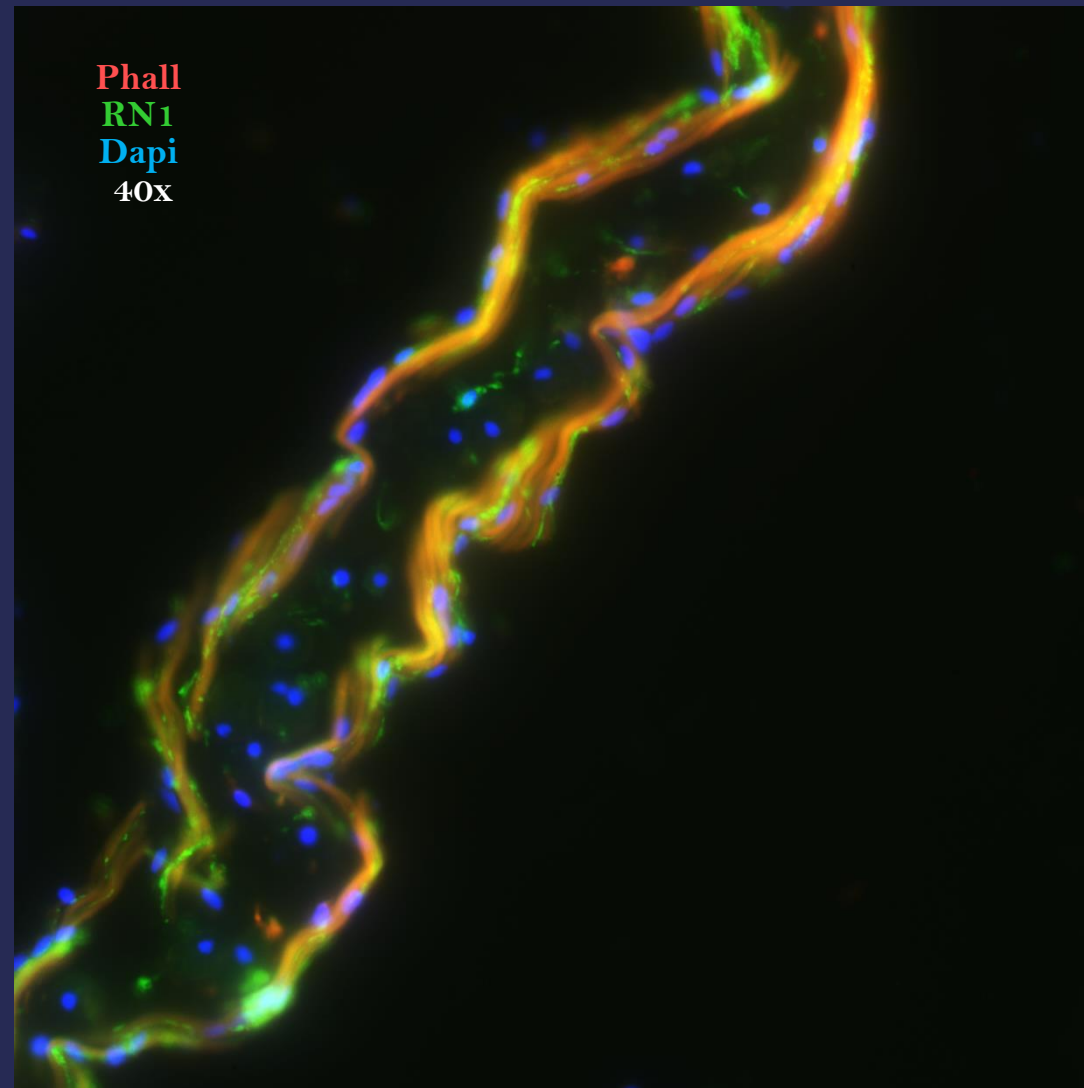
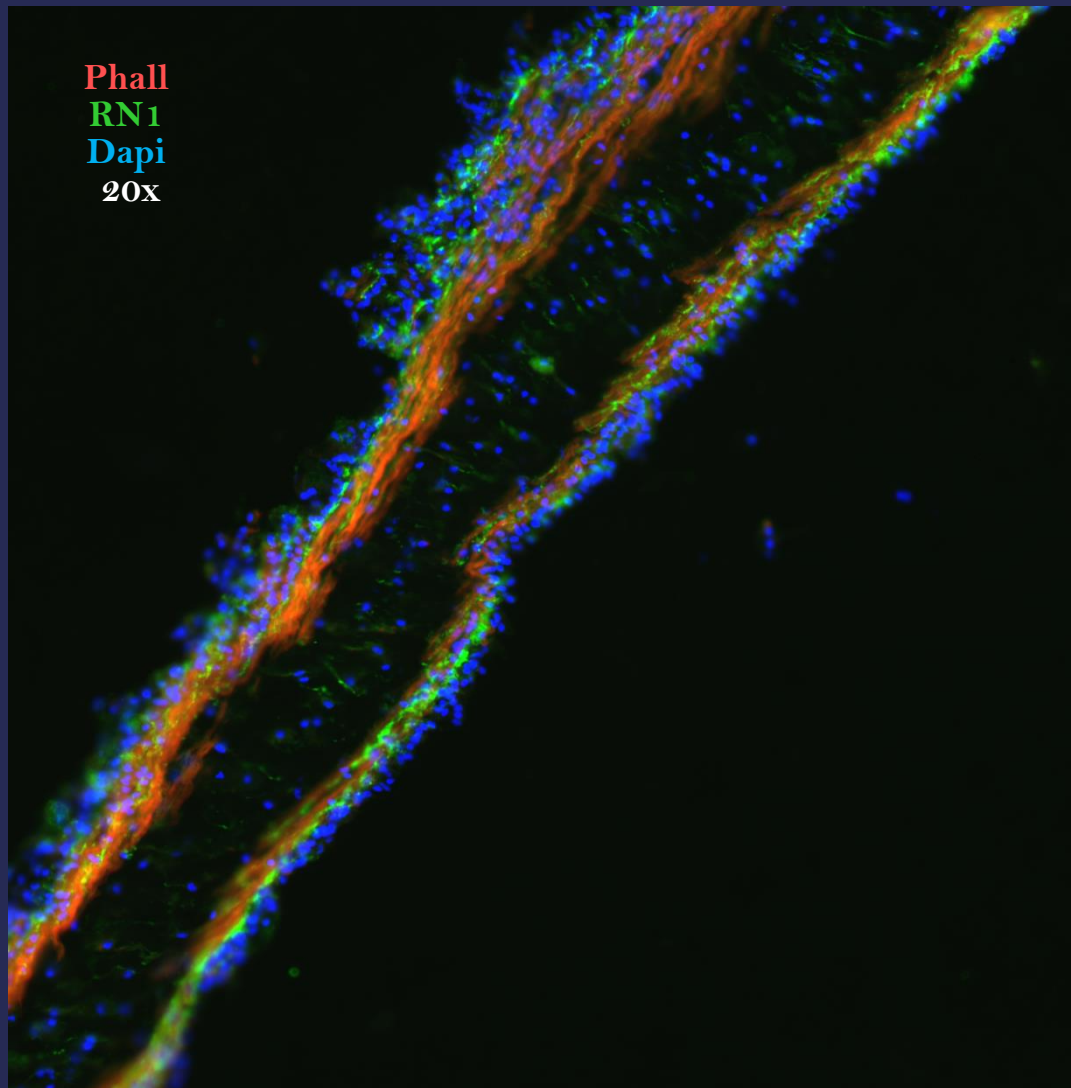
# Results



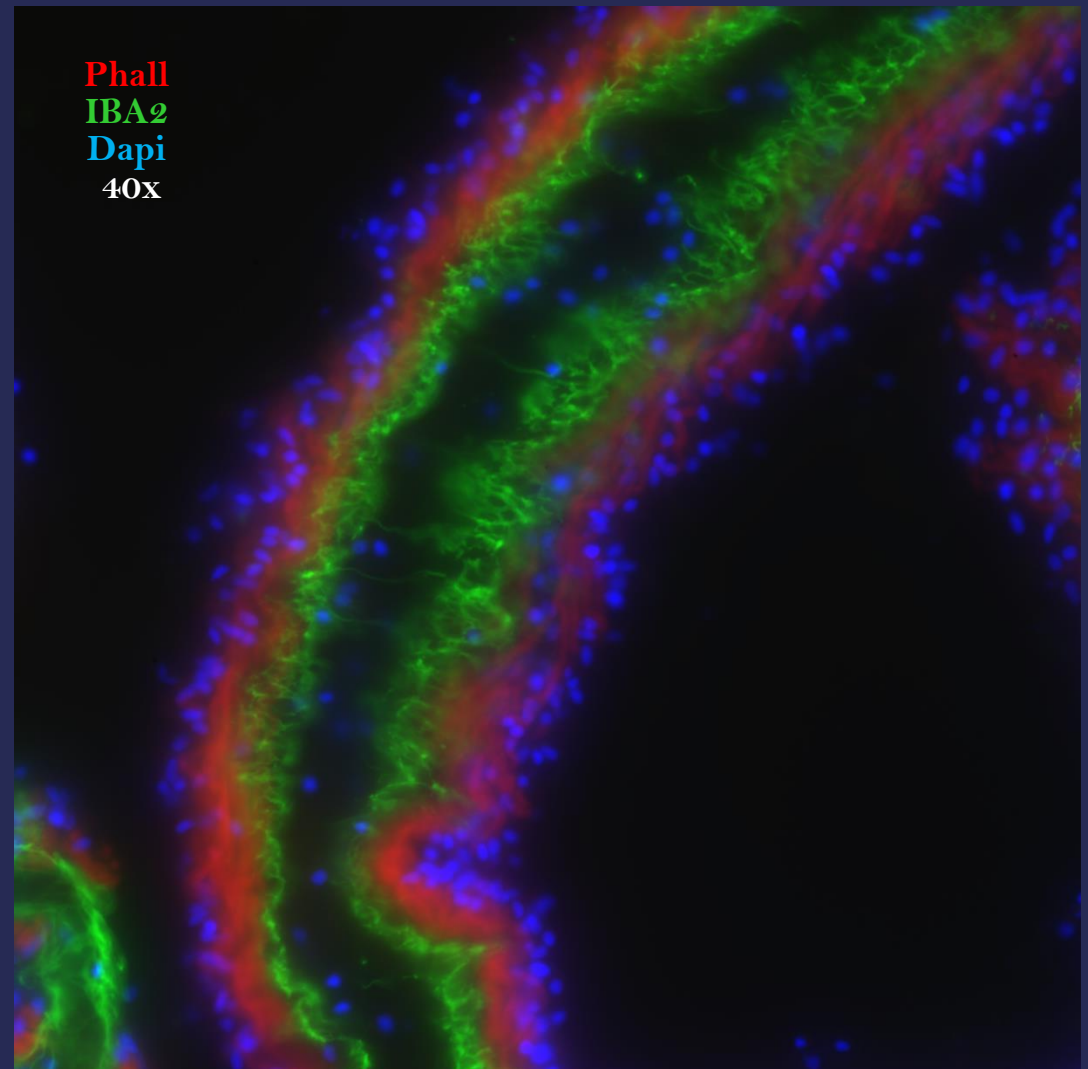
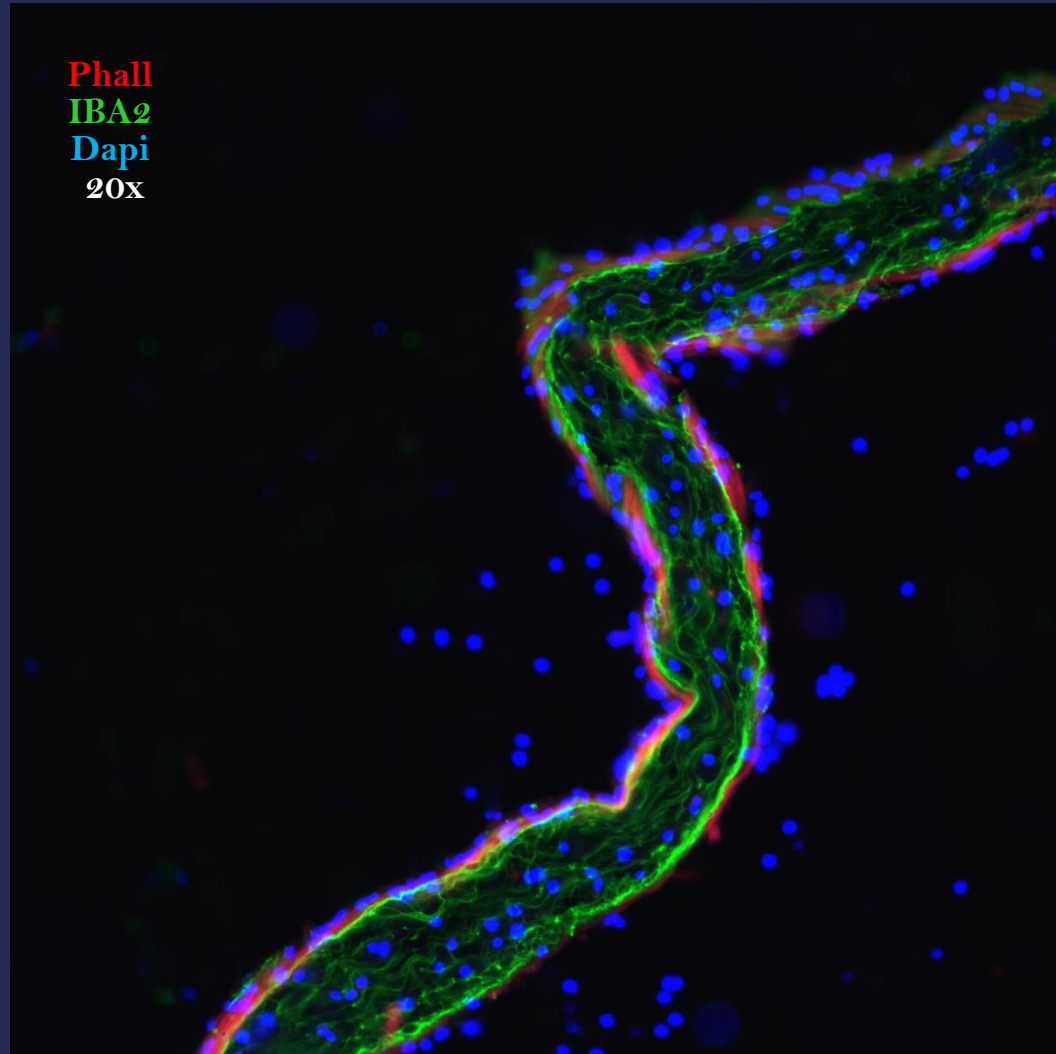
# Meso I + Phalloidin



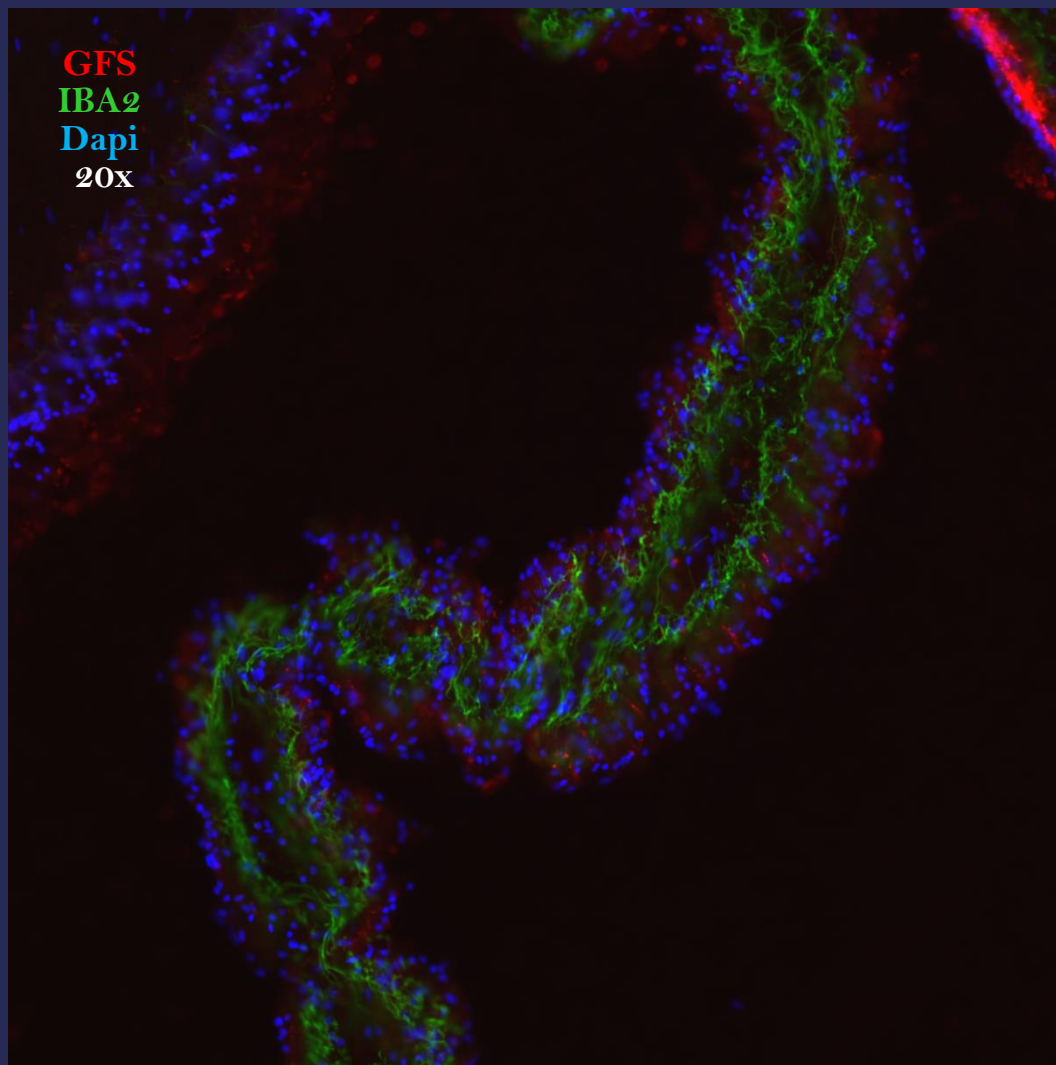
# RN1 + Phalloidin



# IBA 2 + Phalloidin



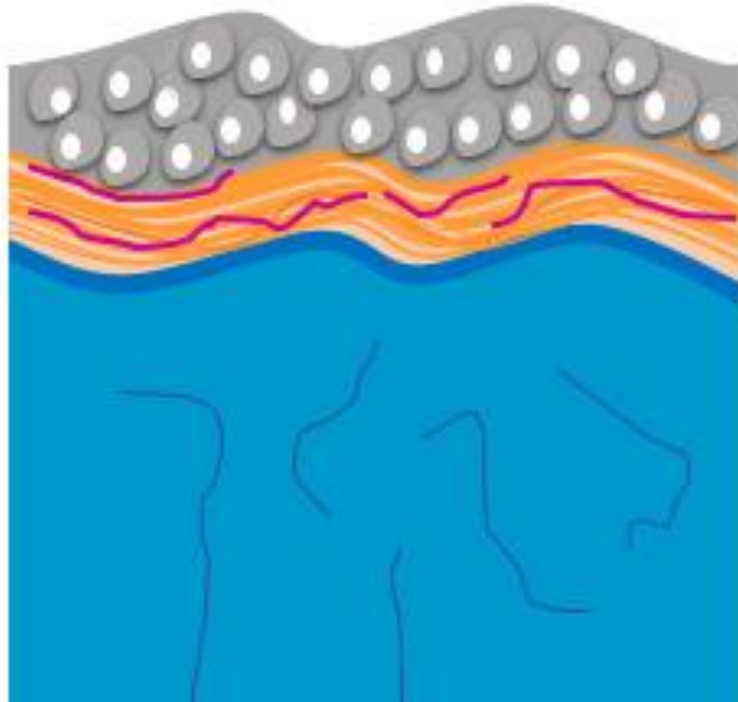
# IBA2 + GFS





# Conclusions

The intestinal mesentery has the following tissue arrangement:



Celomic epithelium

**Muscle**

**Basal lamina**

**Nervous tissue**

**Connective tissue**

# Acknowledgements

- Lymarie Díaz & Miosotis Alicea
- UPRRP
- Developmental Neurobiology Laboratory
- NeuroID

